

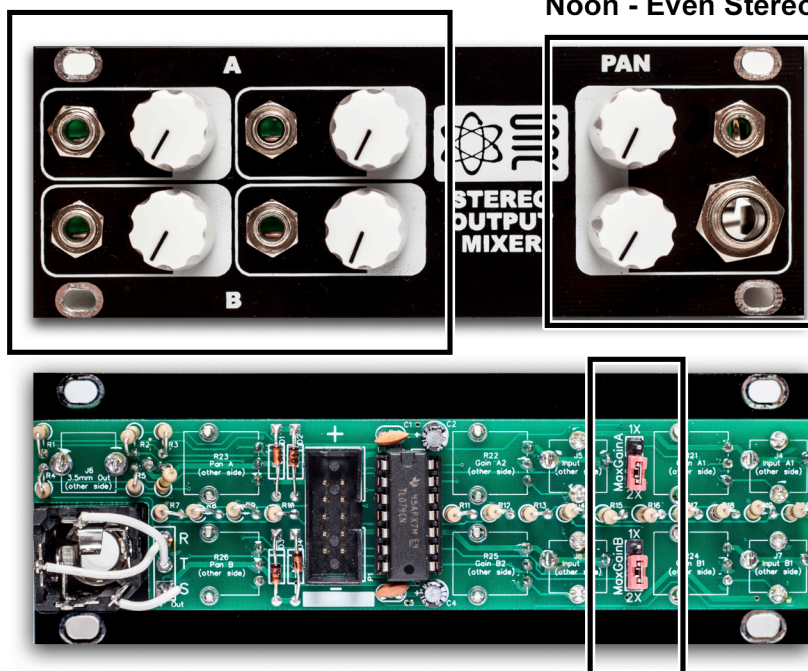
1U Stereo Output Mixer Quick Start Guide

When in 1x mode the dial at noon is 50% gain
full CW is 1x gain

When in 2x mode the dial at noon is 100% and
full CW is ~ 2x gain

Pan pots per channel:

Fully CCW - Left Pan
Fully CW - Right Pan
Noon - Even Stereo



3.5mm & 1/4" Stereo
Outputs are common

Jumper Select 1x or 2x Gain Per Channel

Product Features

10 Pin Keyed Eurorack Power
24HP
Module Depth: 32mm
Mix Audio and CV Signals

Current Draw

+12: 13mA
-12: 10mA
+5: does not use