

Synthrotek Either-OR Visual Bill of Materials / Parts List

Resistors

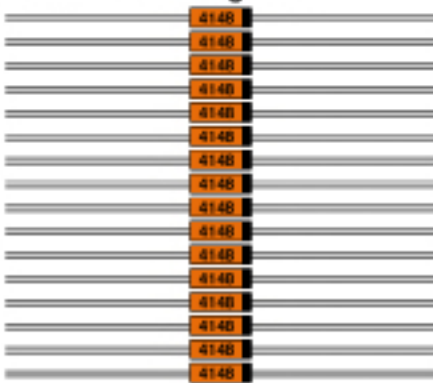
1MΩ - 1/4W - R1 through R8



Total - 8

Diodes

1N4148 - D1 through D16



Total - 16

Screws

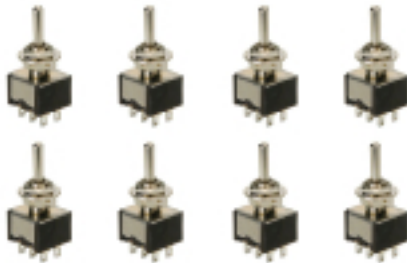
3mm Screws

2.5mm Screws



Switches

DPDT On-On-On - SW1 through SW8



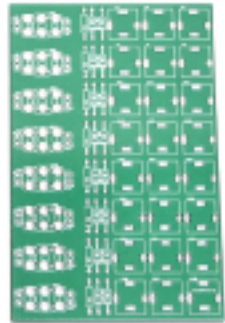
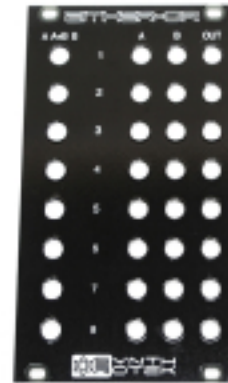
Total - 8

Jacks / Connectors PCB and Panel

3.5mm Vertical Mono - J1, J2, J3, J6, J7, J8, J11, J12, J13, J16, J17, J18, J21, J22, J23, J26, J27, J28, J31, J32, J33, J36, J37, J38



Total - 24



2-pin Header - J4, J5, J9, J10, J14, J15, J19, J20, J24, J25, J29, J30, J34, J35, J39, J40



Total - 16

2-pin Jumper - J4, J5, J9, J10, J14, J15, J19, J20, J24, J25, J29, J30, J34, J35, J39, J40



Total - 16