

Synthrotek Ratatak (PCB Mount) Visual Bill of Materials

Resistors

47Ω - 1/4W - R2



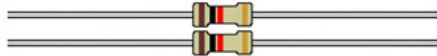
100Ω - 1/4W - RX2



560Ω - 1/4W - R9



1kΩ - 1/4W - R1, R10



1.5kΩ - 1/4W - R12



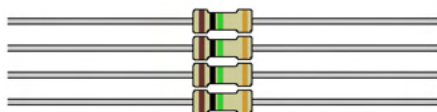
10kΩ - 1/4W - R13



100kΩ - 1/4W - R3, R4



1MΩ - 1/4W - R6, R7, R8, R11



Total: 13

Capacitors

30pF Ceramic - C6



100pF Ceramic - C9



1nF Ceramic - C5



2.2nF Ceramic - C12



3.3nF Ceramic - C11



22nF Ceramic - C4



47nF Ceramic - C3



1μF Electrolytic - C13



2.2μF Electrolytic - C8



4.7μF Electrolytic - C7, C10



47μF Electrolytic - C2



100μF Electrolytic - C1



Total - 13

Diodes

1N4148 - D1, D2, D3, D4



Germanium Diodes - D5, D6



Total - 6

5mm Red LED - LED1



Total - 1

Transistors

2N5458 JFet - Q1



Total - 1

Integrated Circuits

LM308N - U1 8 Pin Socket - U1



Total - 2

Potentiometers

10kΩ (Linear)- VR2



100kΩ (Linear) - VR4



100kΩ (Exponential) - VR1, VR3



Total: 4

Switches

4 Position DIP Piano Switch - SW2



3PDT Stomp Switch



Total - 2

1/4" PCB Mount Mono - J3



1/4" PCB Mount Stereo - J2



Total - 2

Other Connectors

9v Battery Clip

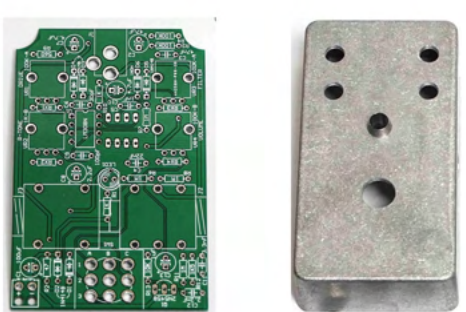
2.1mm DC Jack



LED Bezel



PCB and Case



Knobs



3 Pin Machined Pin Headers

